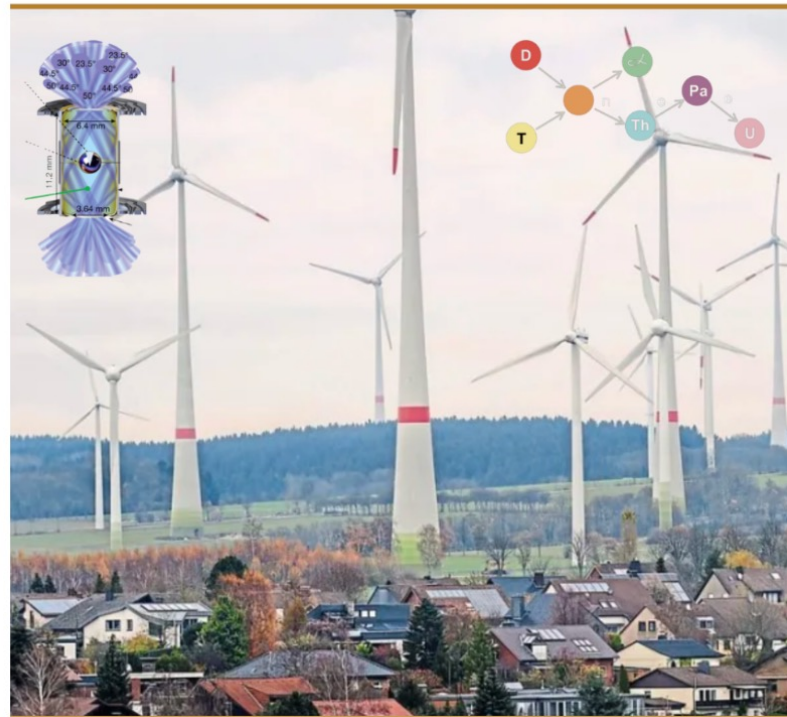


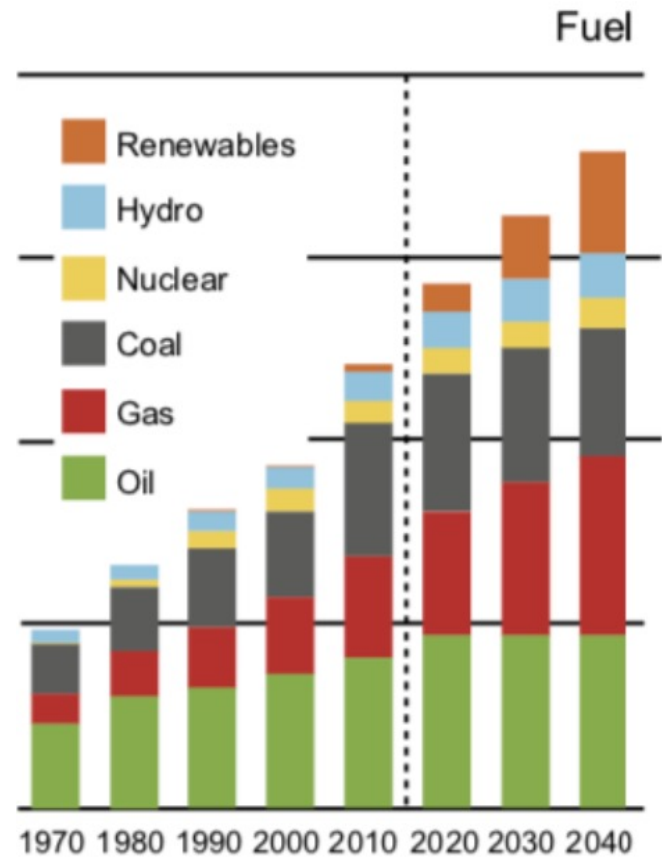
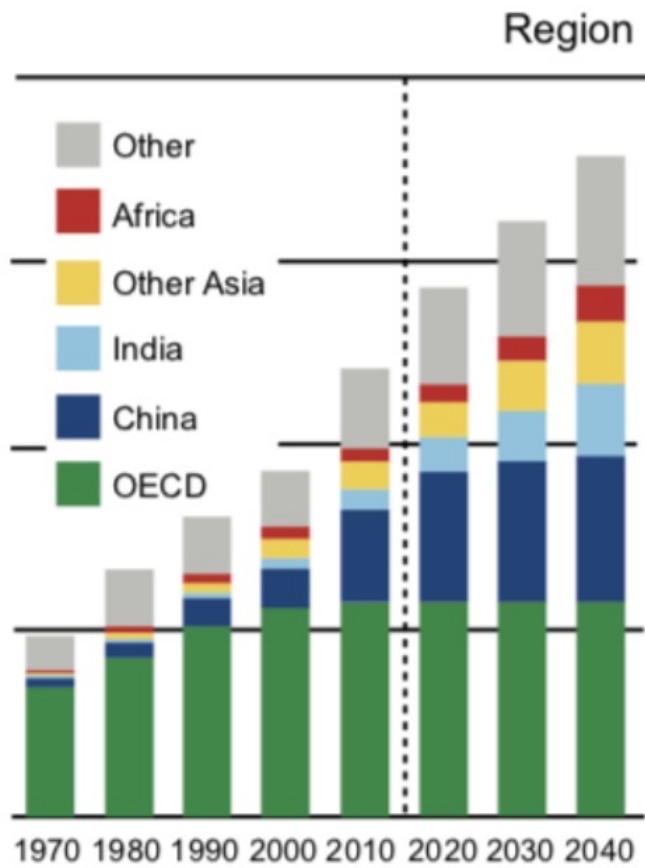
MASS DELUSIONS

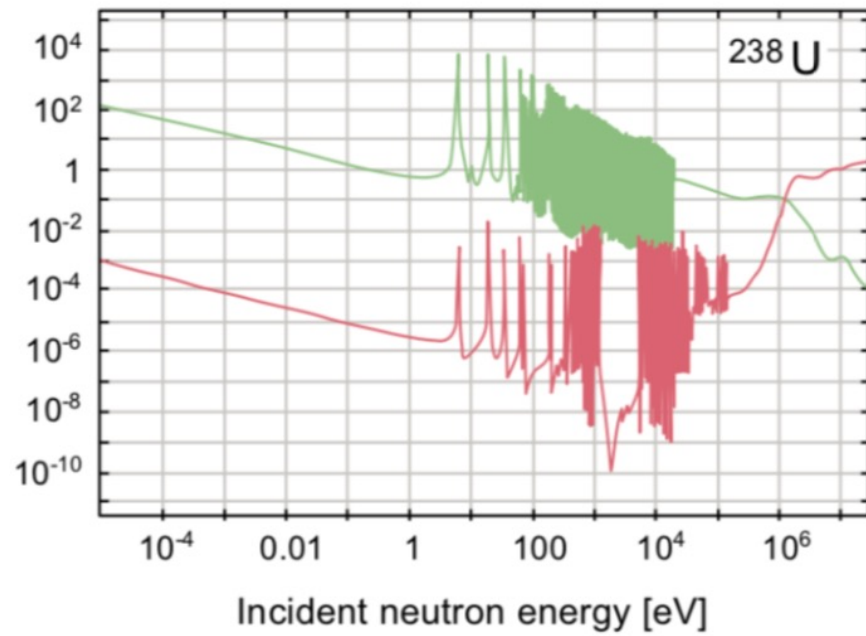
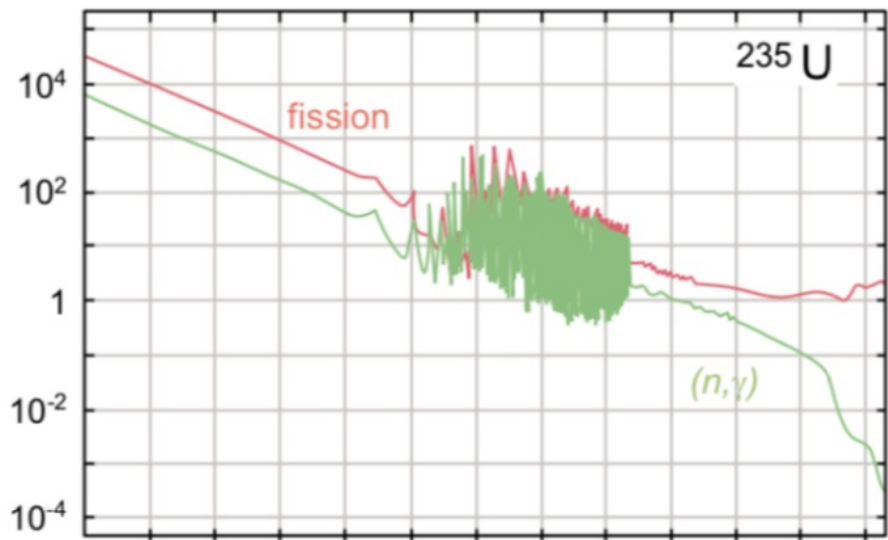
How they harm sustainable energy, climate policy,
fusion, and fusion breeding

Wallace Manheimer

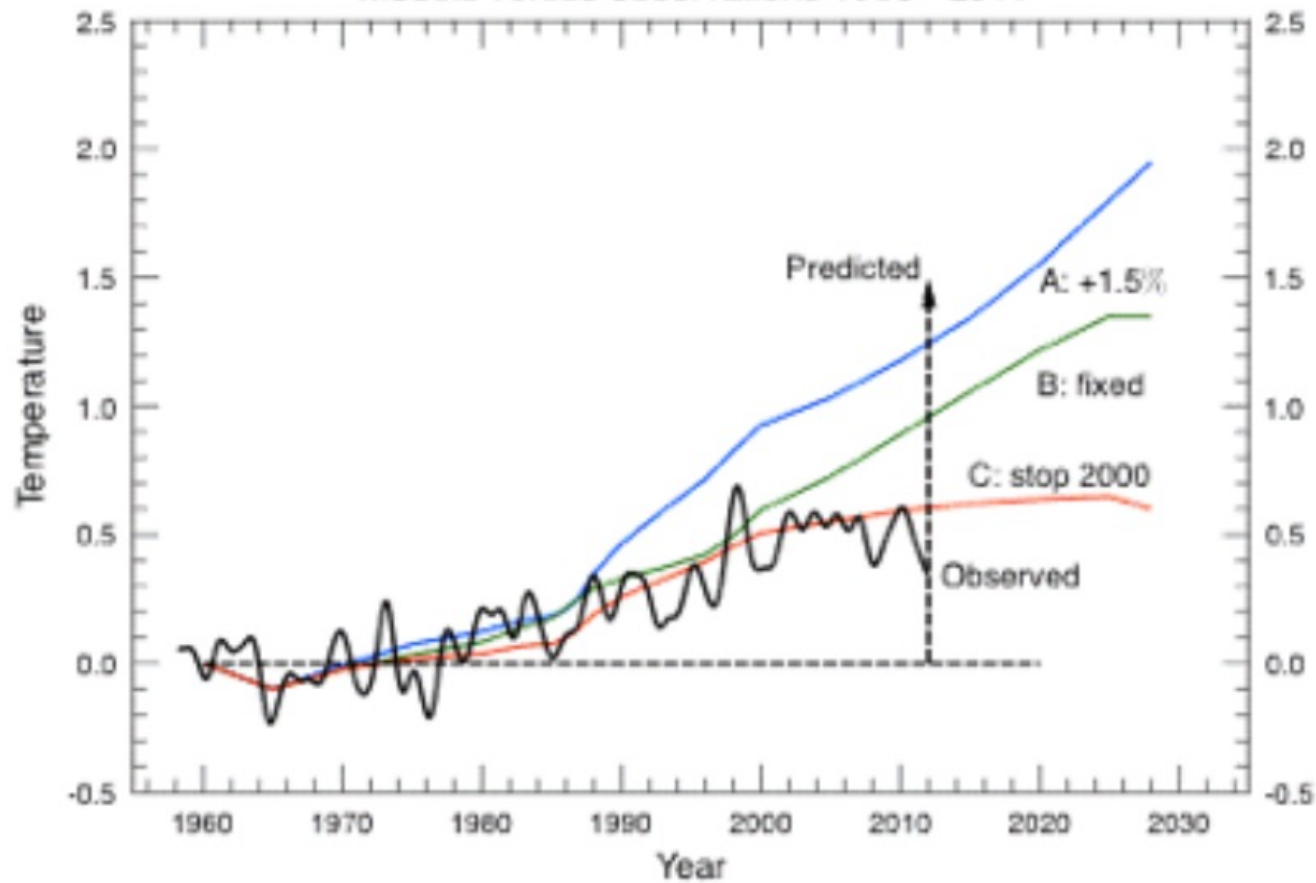


Generis
PUBLISHING



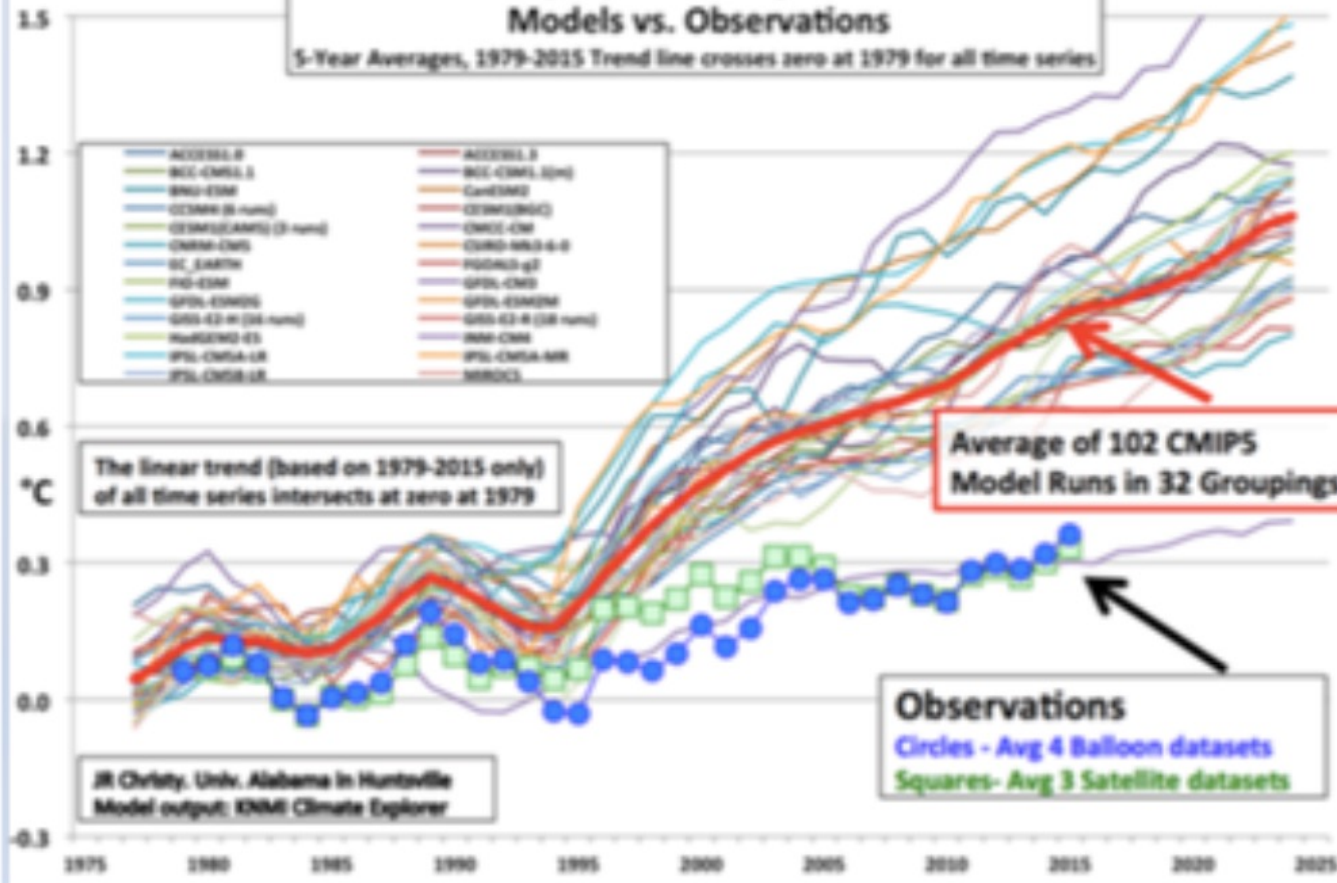


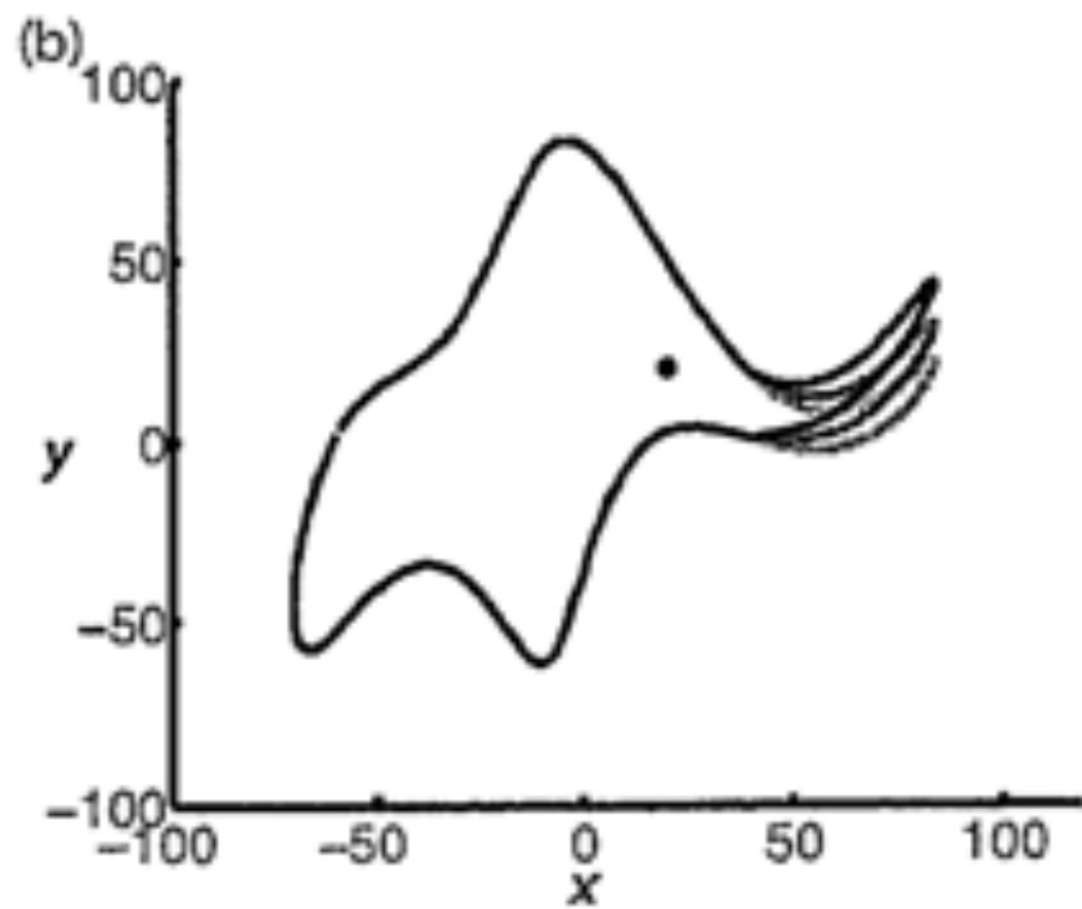
Models versus observations 1958 - 2011



Global Mid-Tropospheric Temperature Variations Models vs. Observations

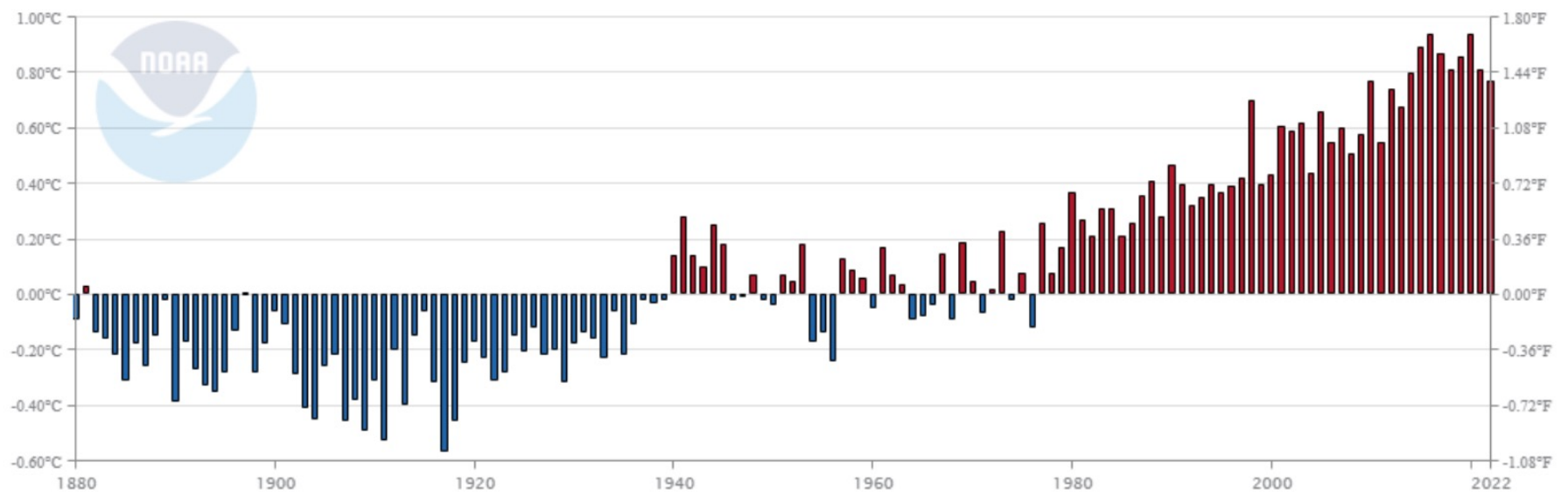
5-Year Averages, 1979-2015 Trend line crosses zero at 1979 for all time series



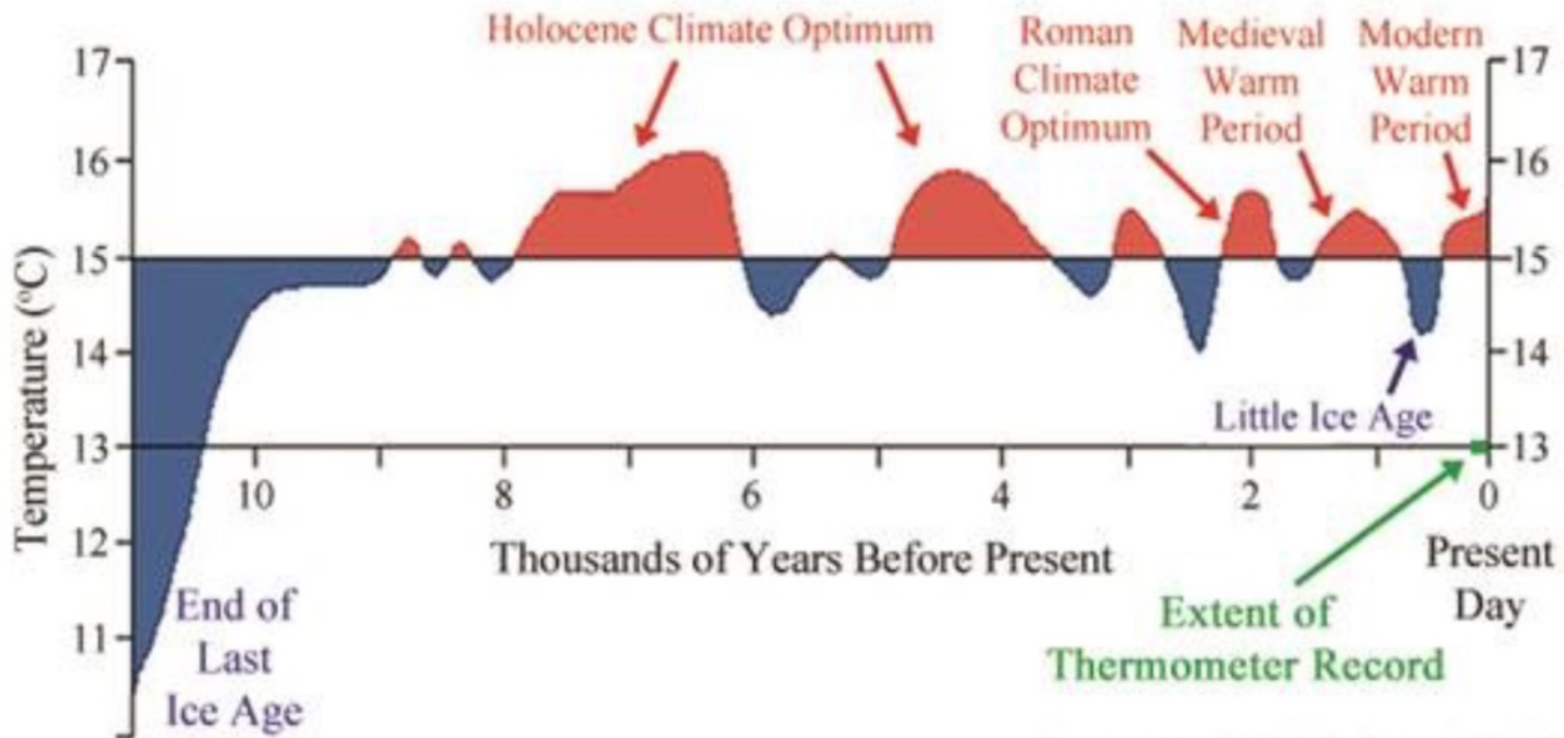


Multiple lines of evidence strongly support the finding that anthropogenic greenhouse gases have become the dominant driver of global climate warming observed² since the mid-twentieth century⁷.

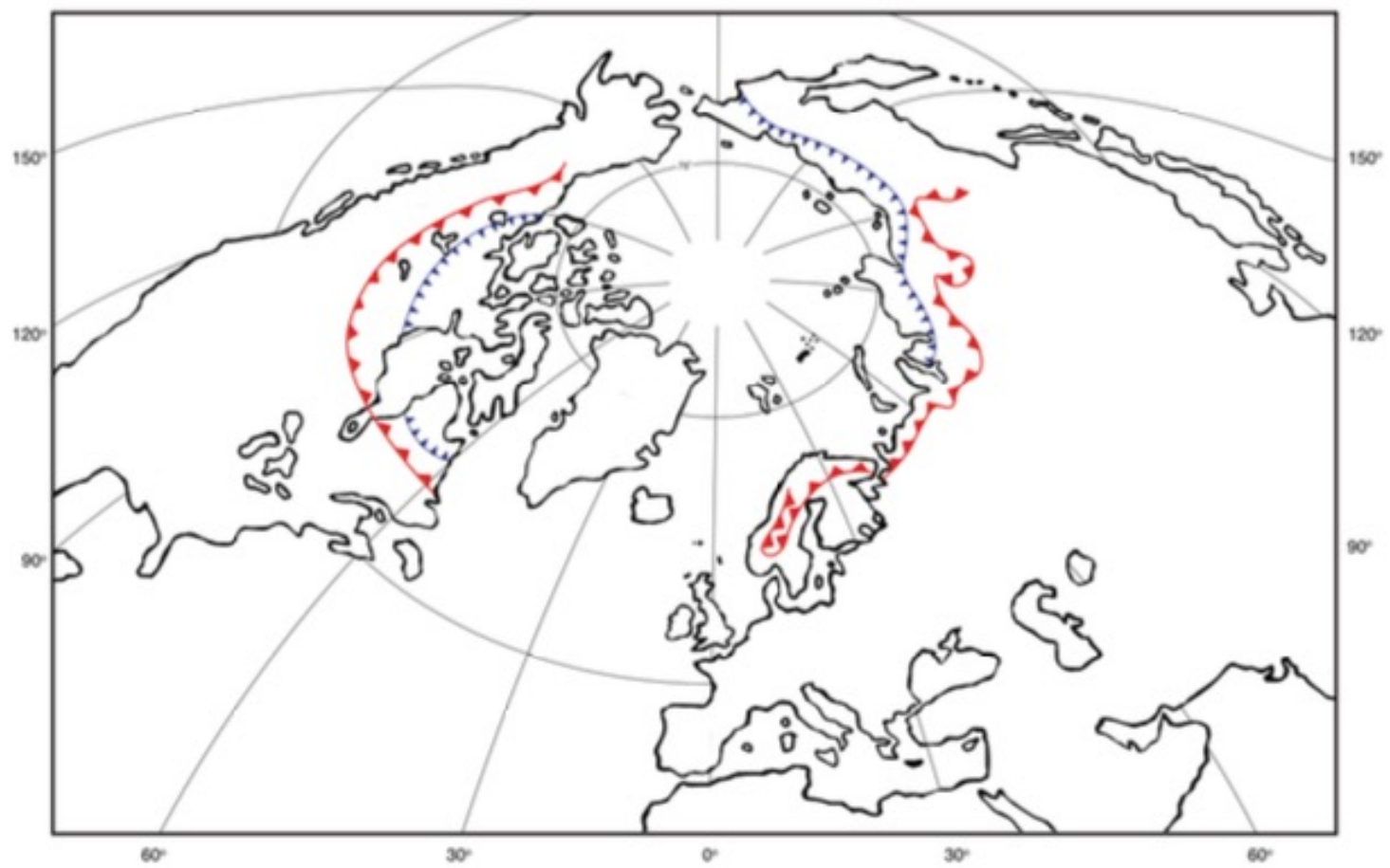
Global Land and Ocean May Temperature Anomalies



Temperatures of the Last 10,000 Years (Ice core data from Crete site in central Greenland)



Daansgaard (1984), Avery (2009)





Roman Vineyard Locations

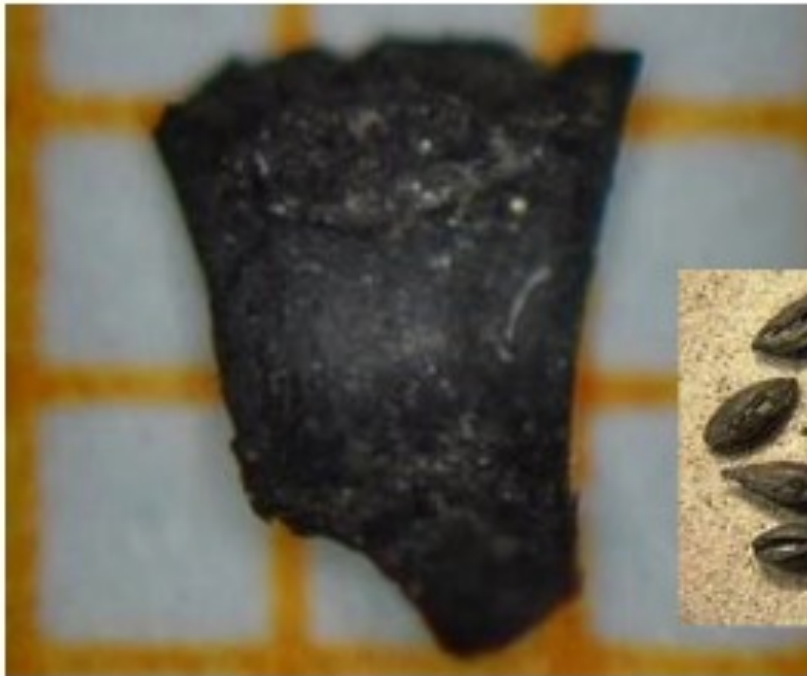
1. North Thoresby, Lincolnshire
2. Wilby Way, Northants.
3. Wollaston, Northants.
4. Grendon, Northants.
5. Fen Drayton, Cambridgeshire
6. Stanton Low, Bucks.

KEY

- Suspected Roman Vineyards
- Pruning hook finds



100 km



Each grain of barley is only a couple of millimetres long, and the grain weighs less than 0.01 mg – yet the find is now regarded as an archaeological sensation.
Photos: Peter Steen Henriksen

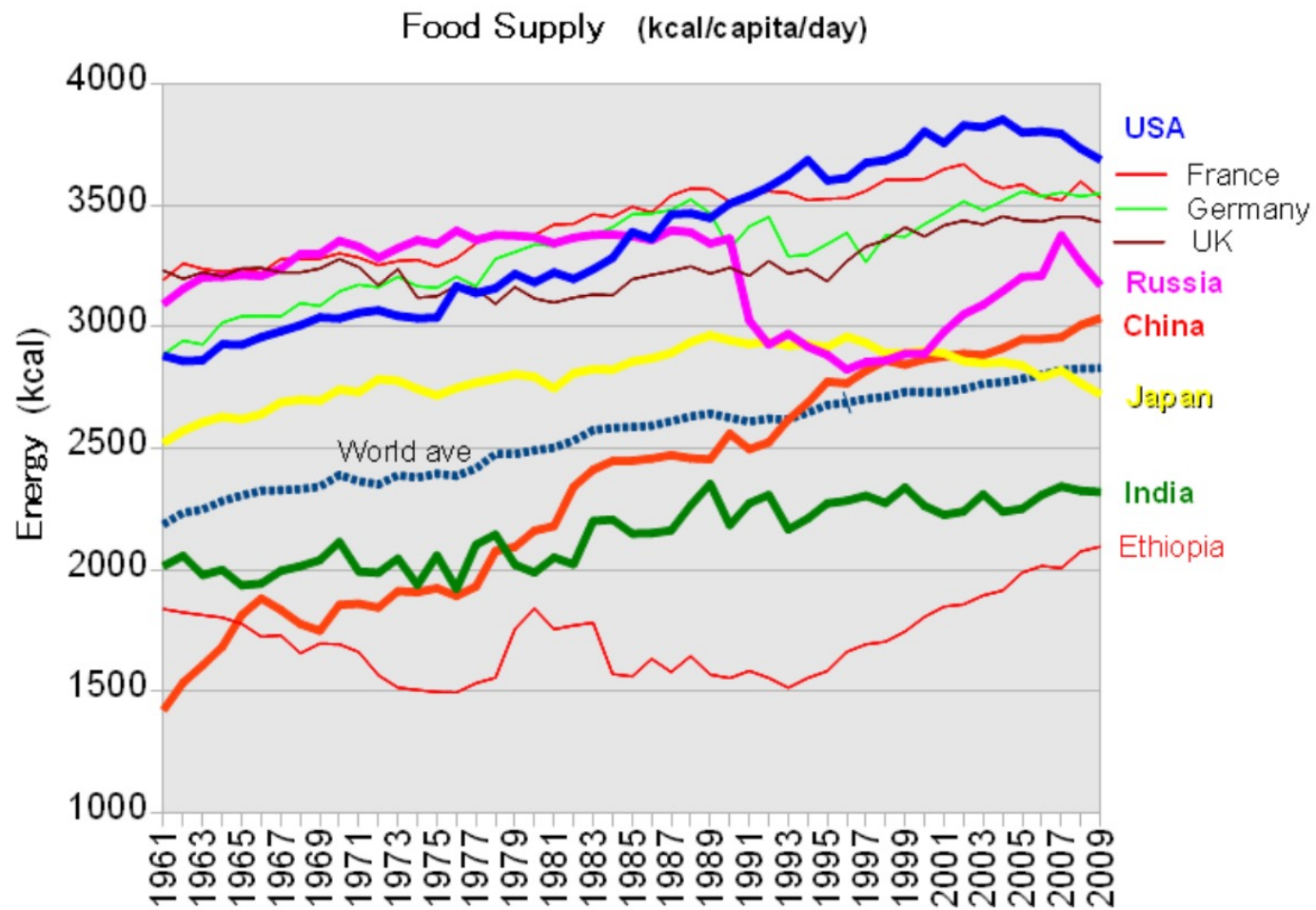


But now with climate change, we face a slowly escalating but long-enduring global threat to food supplies, ...to support a population of more than 7 billion people.

The time for debate has ended. Action is urgently needed.....to reduce their per-capita fossil fuel emissions even further...



Fig. 1. "The Death of Socrates" by Jacques-Louis David, 1787.



Both IPCC and skeptics calculate additional radiation from excess as $\sim 1/2$ -1% of average solar radiation.

Stefan Boltzman law: Radiation $\sim T^4$ or $T \sim (\text{radiation})^{1/4}$

$1/2$ -1% more radiation means $1/8$ - $1/4$ % change of Temperature on the absolute scale, or $< 1^\circ\text{C}$

It is more complicated than that, but APS ignores the most basic, and simplest theory without saying why.

Why does the APS go along with such obvious false statements?

Cannot read their minds, but 2 possibilities are hard to ignore:

1. They did not do even minimal due diligence.
2. They realize that \$\$\$ are available only for supporting the false climate crisis

Or as Alexander Pushkin said (via Will Happer)

Put out a trough and the pigs will come!



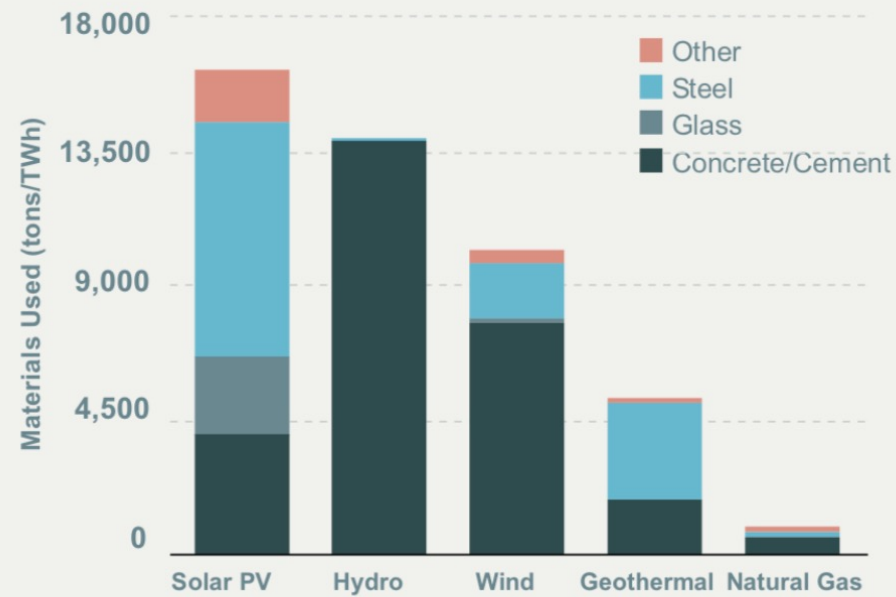






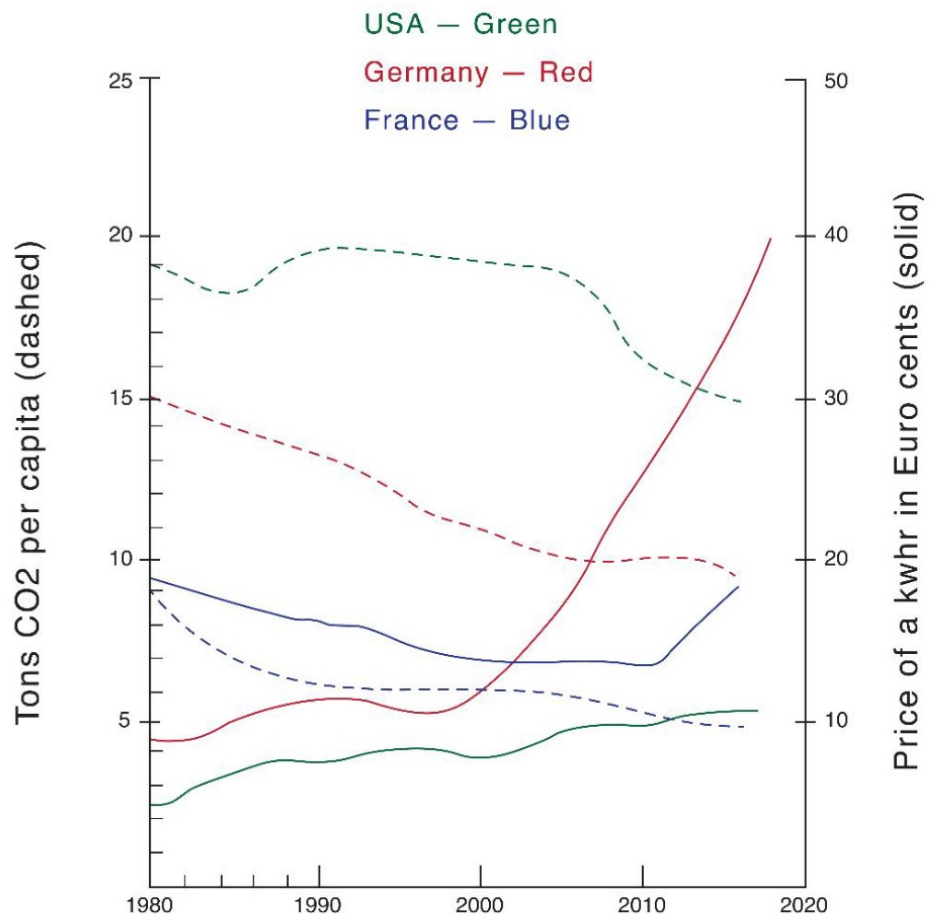
FIGURE 1.

Materials Requirements to Build Different Energy Machines



Source: U.S. Department of Energy (DOE, "Quadrennial Technology Review: An Assessment of Energy Technologies and Research Opportunities," September 2015, p. 390

Chart: Manhattan Institute





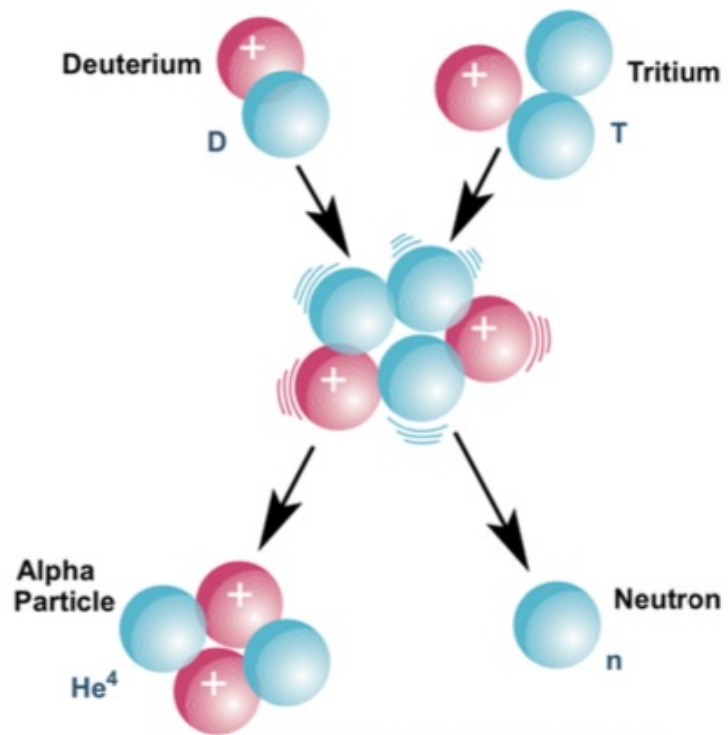


Near Harlingen, Texas 2017 (39)

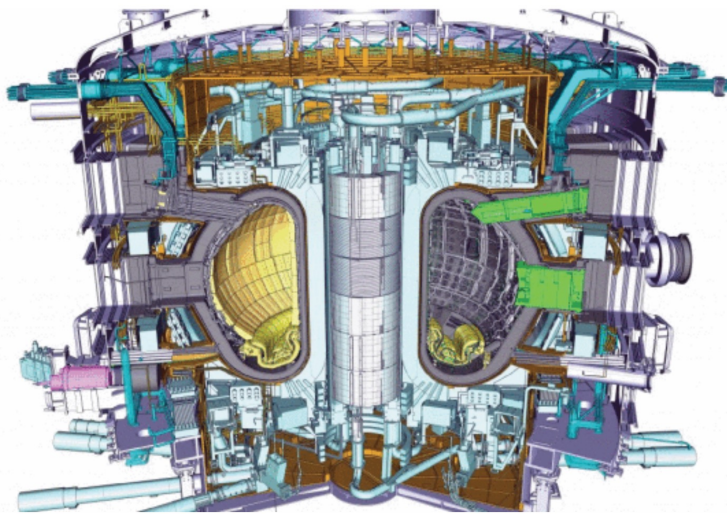




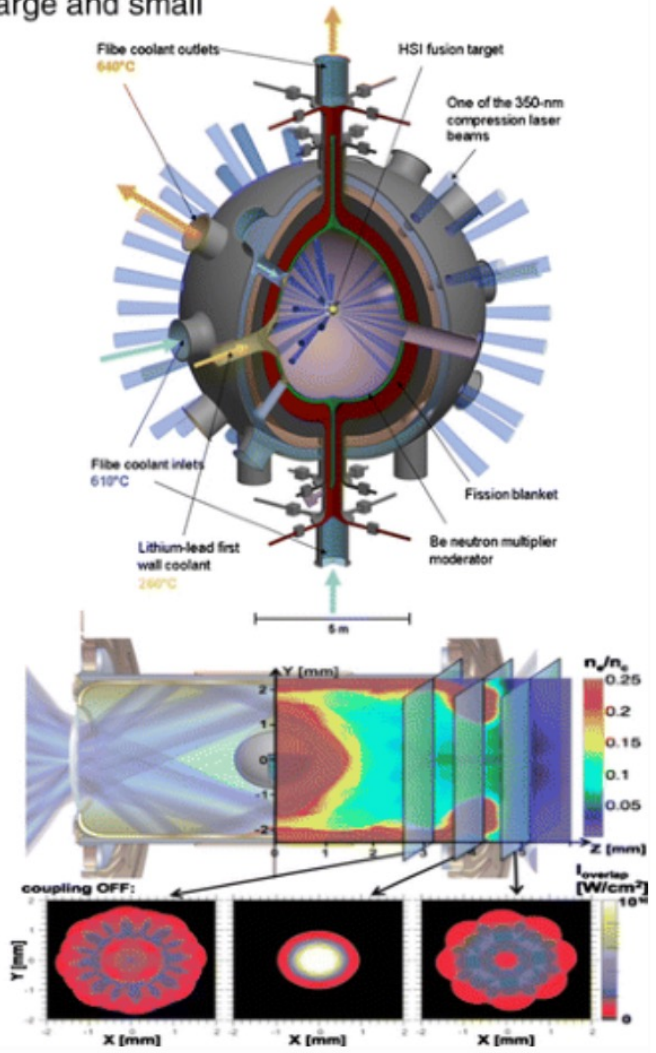
Oklahoma nan handle. July 2021 (41)

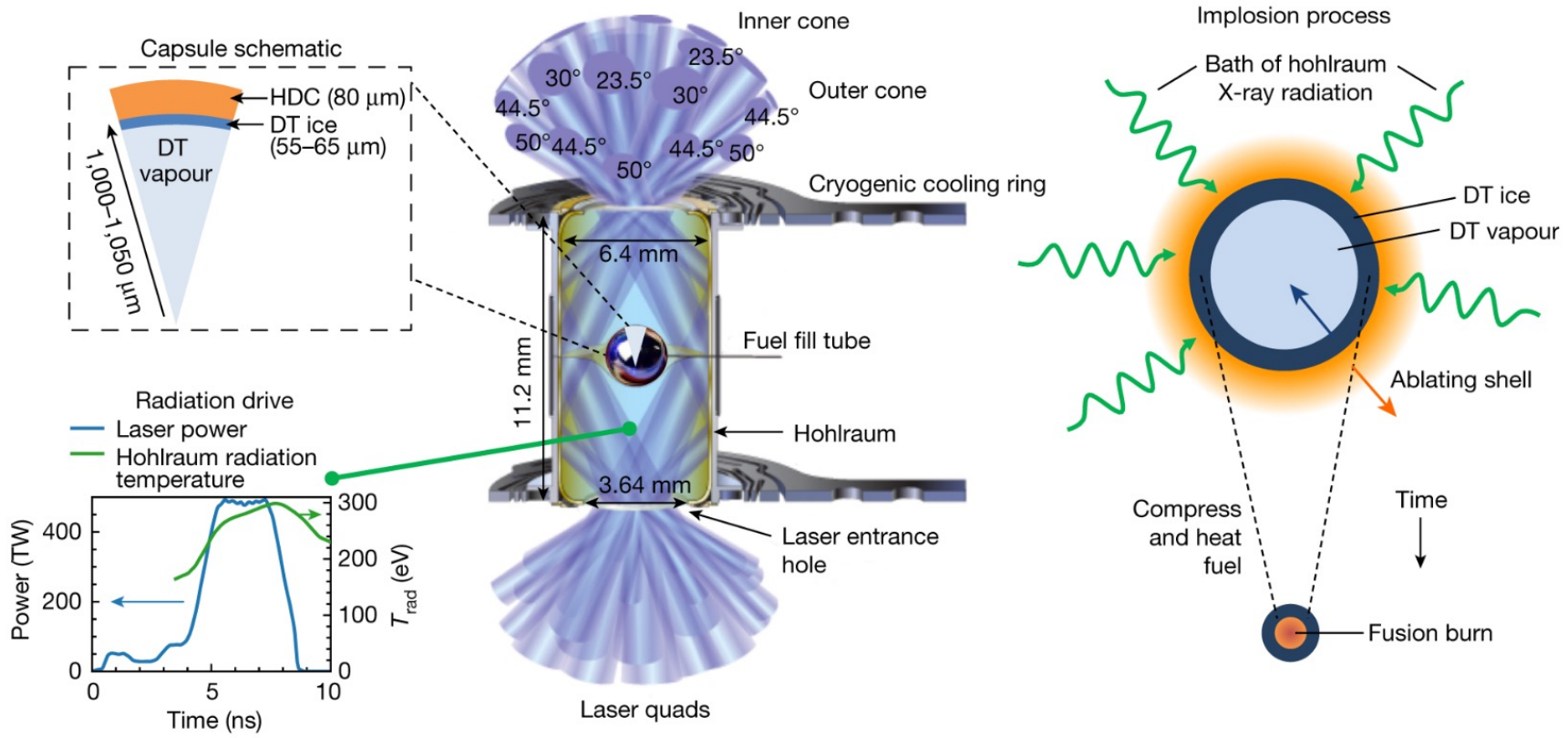


ENERGY MULTIPLICATION
About 450:1

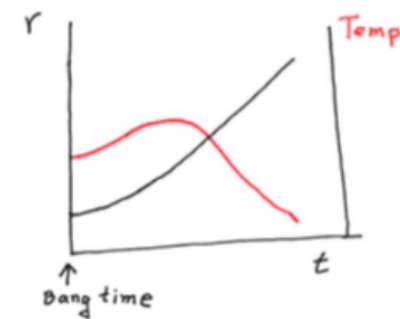


NIF The large and small

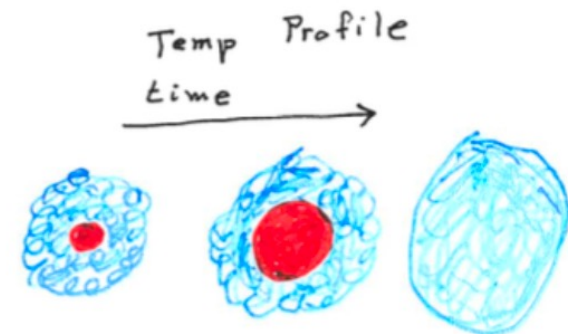


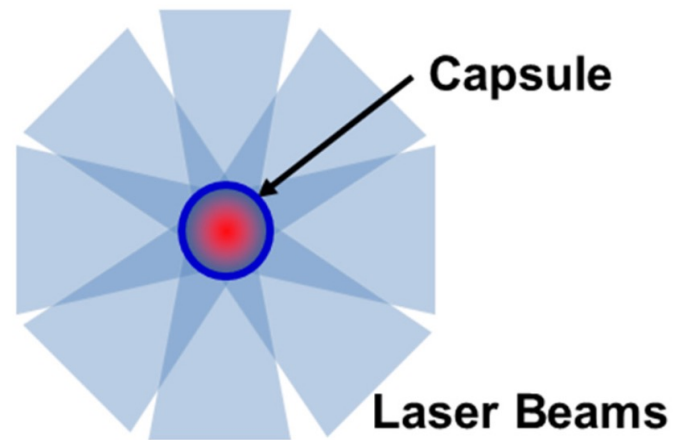
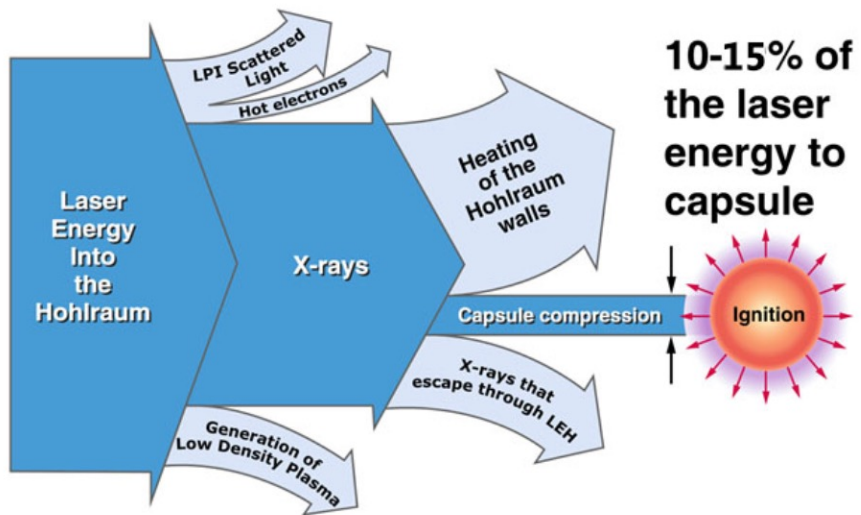


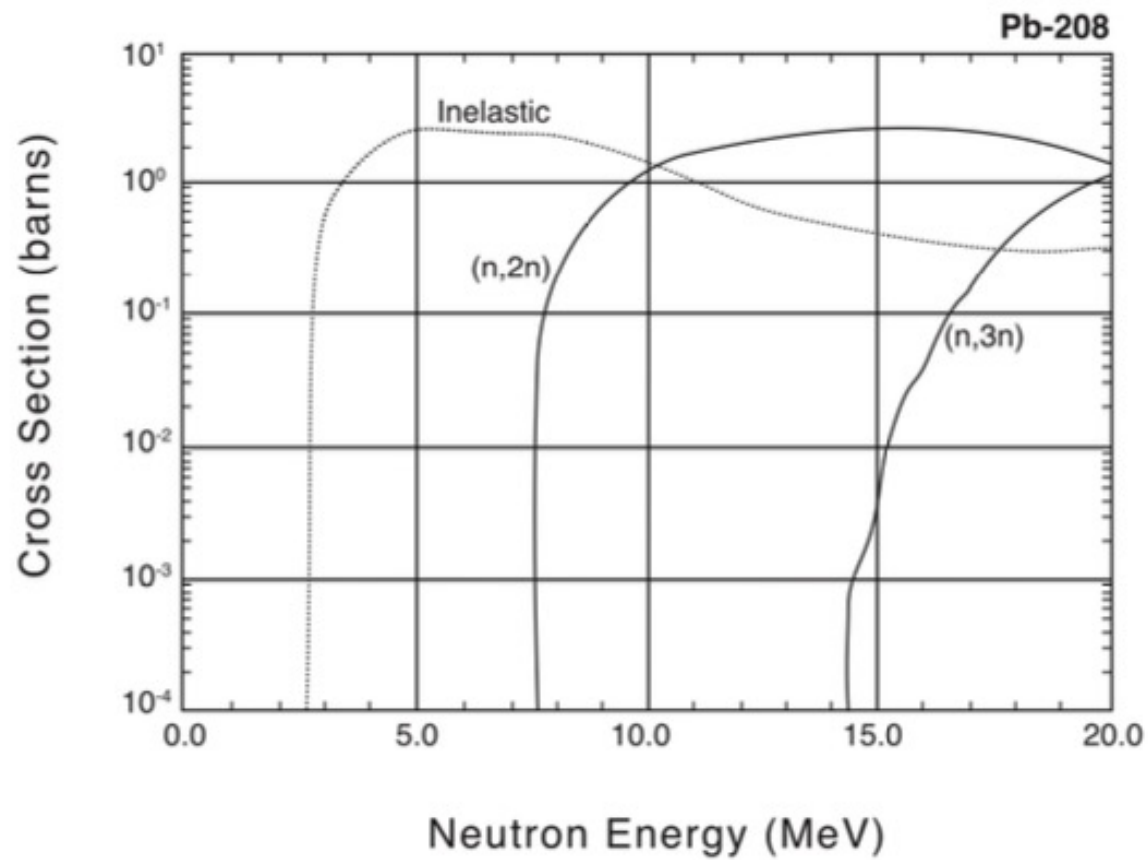
Shot Aug, 2021, Laser energy 1.7 MJ,
fusion energy 1.3MJ, $Q=0.76!$ On line
seminar, Sept 2021

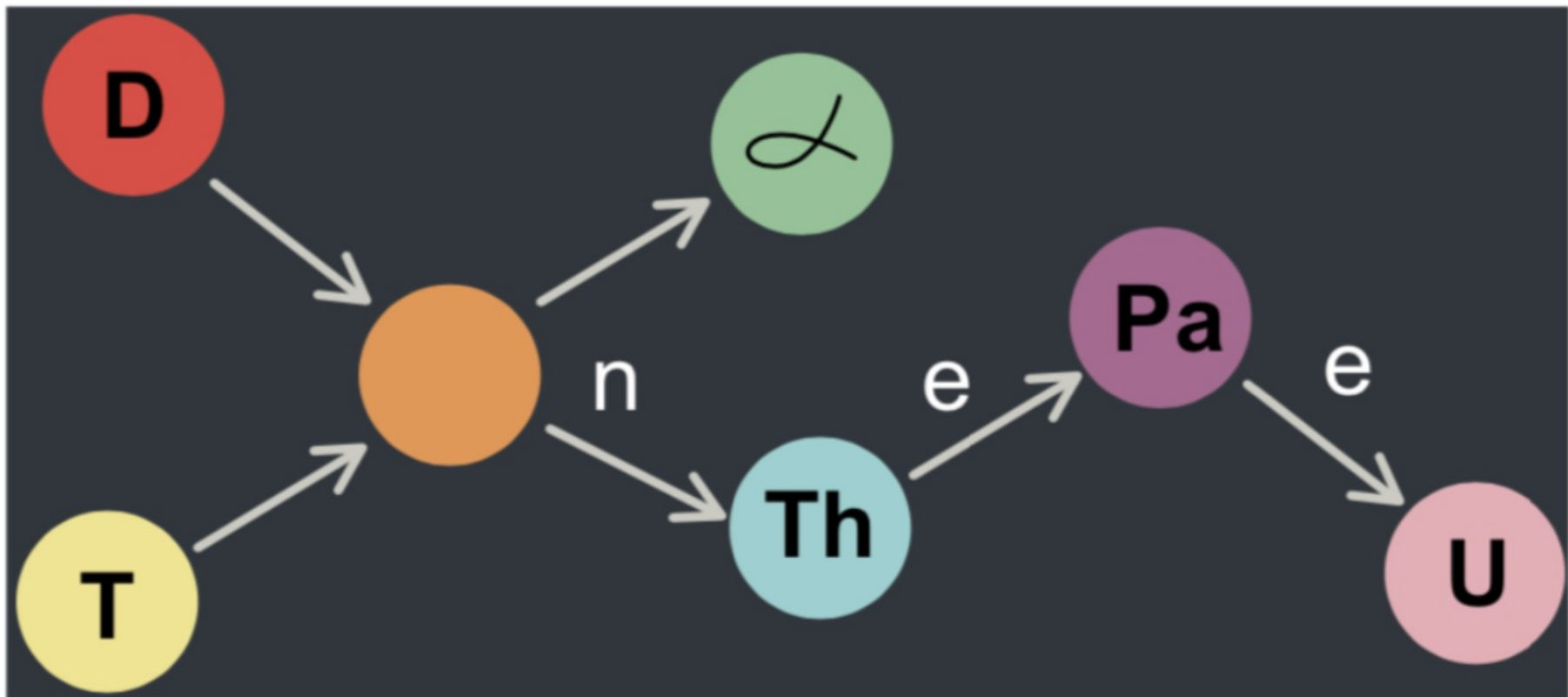


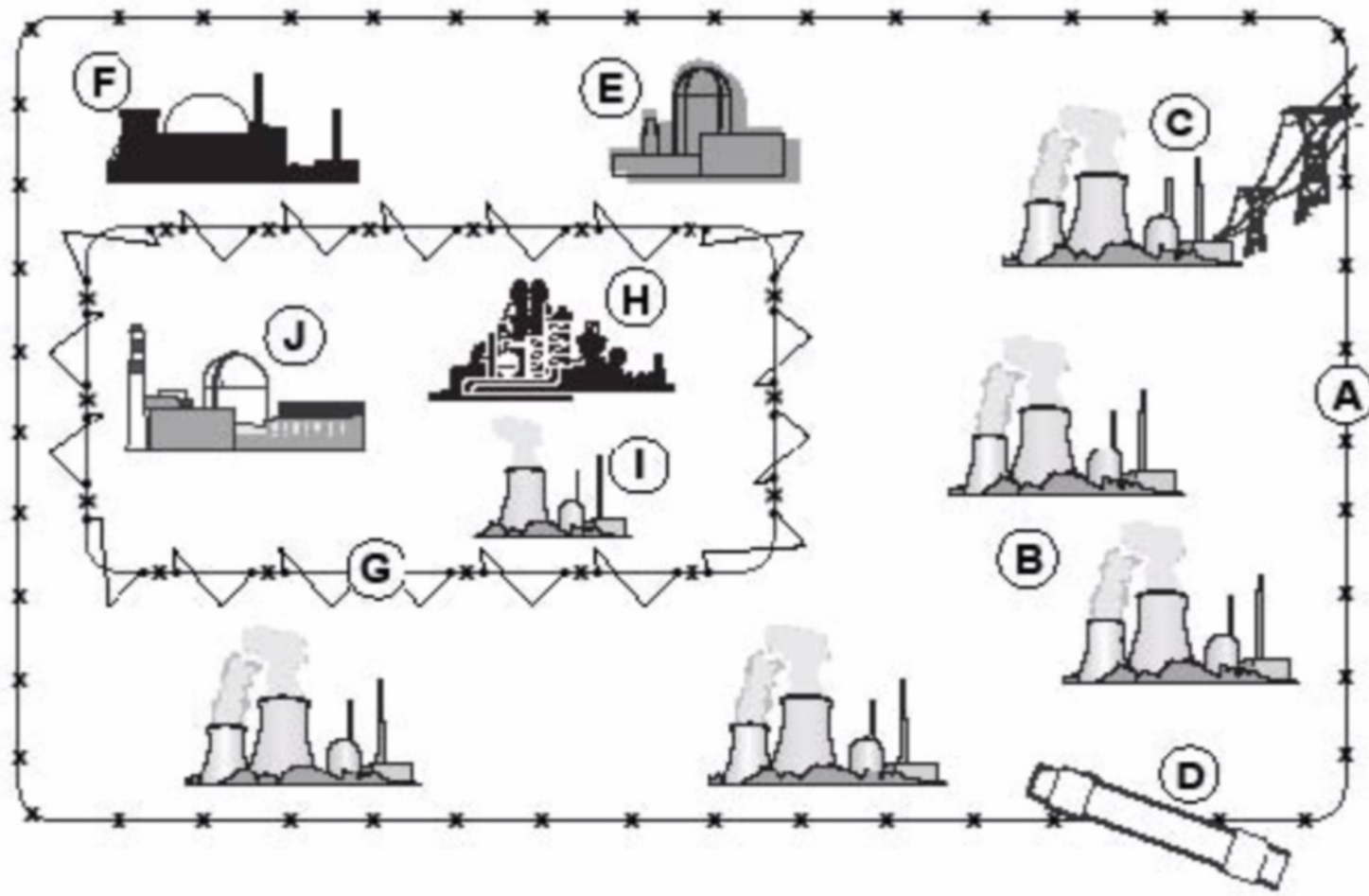
Shot Oct, 2022, Laser energy 1.9 MJ, fusion
energy 1.2 MJ, $Q=0.63!$ Laurent Divol,
plenary talk DPP meeting.













Bruce A